

Our Product Lines



Handheld - Ideal Field Service Tools



ParaScope GigE - 10/100/Gigabit and Metro Ethernet Testing

Features Include:

- Dual Port, Electrical and Optical Interfaces
- Bit Error Testing (BERT)
- RFC2544 Performance Testing
- Traffic Generation, up to 500 stations
- Statistics and Filtering for layers 1/2/3
- QoS Analysis
- Diagnostics include PING, TraceRoute, cable length and more



ParaScope ADSL2+DMM and ParaScope ADSL2+ez

Features Include:

- Supports ADSL1/2/2+ Annex A, B, I, L, M
- Basic testing for parameters, alarms and errors
- Bits/Tone Graph
- Modem emulation and ISP Dial/Login
- PING
- Digital multi-meter (DMM), voltage, ohms, current and more



ParaScope Lite - T1, E1 and V-series Testing

Features include:

- Plug-in modules for T1, E1, V-series, 64kbps G.703, E1 jitter
- Bit Error testing (BERT), M.826 and M.2100
- Voice monitoring
- Detects and indicates errors and alarms, and channel activity
- Monitor and Through-mode



NetProbe 1000 Series - T3, E3, T1, E1, V-series Testing

Features Include:

- Bit Error testing (BERT), M.826 and M.2100
- Pulse Shape Analysis
- VF Analysis
- MF, DTMF, DP Dial/Answer and Digit Analysis
- Remote Operation
- Protocol decodes

Our Product Lines



Handheld - Ideal Field Service Tools



ParaScope mPA - Advanced Triple Play Test Set - Available 2nd Qtr. 08

Features Include:

- Large 7" bright Touch-Screen Display
- Lightweight rugged enclosure
- Supports ADSL1/2/2+ and VDSL2, and performance testing including emulation
- Comprehensive Copper testing with DMM, RFL, Longitudinal balance etc.
- TDR locates faults and makes precise measurements
- IPTV Analysis including QoS measurements, streaming video and more
- VoIP Analysis including QoS measurements and Phone Emulation
- Web browser
- 10/100/GigE module coming

Our Product Lines



Handheld - Ideal Field Service Tools

Fiber Optic Solutions

We offer a complete line of fiber optic testing equipment solutions to meet the demands for TELCO, WAN, MAN, LAN, CATV, IT, manufacturing and laboratory. Solutions include OTDRs for FTTx application, optical loss test sets for high fiber count applications as well as power meters, light sources, visual fault locators and optical talk sets.

OTDRs - Fiber Fault Locators and Cable Length Estimation

Features Include:

- Supports 1310, 1550 and 1625nm
- Dynamic Range from 34 to 42 dBm
- Detect and locate faults
- Bellcore Reporting format

Power/Loss Meters

[Power Meters](#) allow technicians to determine the level of optical power being emitted. In relative mode, power meters are used with the included source to perform fiber loss measurements or splice tuning operations.

[Optical Return Loss Meters](#) allow technicians to perform precise optical return loss measurements in the field, by indicating the difference between the amount of light transmitted into a fiber component or system vs. the amount reflected back into the transmitter.

[Optical Loss Testers](#) allow technicians to perform everything from basic fiber verification capabilities to advanced troubleshooting and inspection, or documented loss and power measurements.

Miscellaneous

[Laser Light Sources](#) combined with our power meters allow technicians to determine power loss in fiber, connectors, attenuators, or other passive optical components.

[Visual Fault Locators - \(VFL\)](#), allow technicians to see breaks, micro bends, and other anomalies in optical fibers and connectors as the light escapes the fiber.

[Talk Sets](#) allow communication while testing or troubleshooting when conventional phone access is not possible.



Our Product Lines



Turn any PC into a Powerful WAN Analyzer

- Includes concise data monitoring, bit error rate testing, frame simulation, statistical analysis and comprehensive protocol analysis.
- Includes physical line analysis (frequency, voltage, alarms, etc.) with pass/fail results —Available with ParaScope 2000 only.
- Supports Async, Sync, BiSync and bit oriented data.
- Decodes X.25, SNA, Frame Relay, ISDN BRI, ISDN PRI, SS7, GR-303, PPP, Async PPP, SLIP, TCP/IP, Novell, Appletalk, and more.



ParaScope 2000 - Datacom/Telecom Analyzer

Features Include:

- Interfaces to T1, E1, ISDN PRI, ISDN BRI, DDS, RS-232, V.35, X.21, RS-449 and RS-422/423 and RS-530
- Full Breakout
- Available with remote hardware (ParaScope 2000 Probe)



ParaScope MP - Datacom Analyzer

Features Include:

- Interfaces to RS-232, V.35, X.21, RS-449 and RS-422/423 and RS-530
- Full Breakout



ParaScope Plus-USB - Datacom Analyzer

Features Include:

- Interfaces to RS-232
- Full Breakout

Our Product Lines



Comprehensive Network Management Solutions

GigaStor - Advanced Retrospective Analyzer

Features Include:



- Massive data collection (up to 48Tbytes)
- Time-based analysis
- Filters for IP pairs, VLANs, ports etc.
- Reconstruct web pages, emails etc.
- IDS with Snort-style rules
- Expandable
- Capture at line rate (up to 10 Gbps)

Observer Software Suite - Network Analyzer

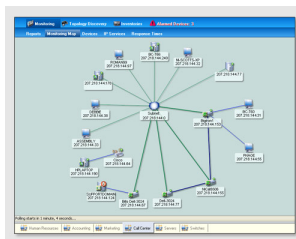
Features Include:



- Packet Capture and Protocol Analysis
- Traffic Statistics and Analysis and Reporting
- Expert Alarms and Analysis
- SNMP Analysis
- VoIP Analysis
- Wireless Analysis
- Web based Reporting
- Distributed monitoring with software and hardware probes

Link Analyst - Datacom Analyzer

Features Include:



- Active Device discovery and Route mapping
- Configurable Alarms and Event logging
- Monitor Resource and View Detailed Reports
- Monitor device Response Times
- Integrates with Observer

Our Product Lines



Wireless Network Analysis and Management

AirMagnet Wireless Solutions

AirMagnet solutions give complete control over the entire lifecycle of the wireless LAN from network design and deployment all the way to 24x7 intrusion prevention and troubleshooting. AirMagnet provides unrivaled visibility into all aspects of your wireless airspace with the intelligence to automatically diagnose, explain and respond to any wireless challenge.

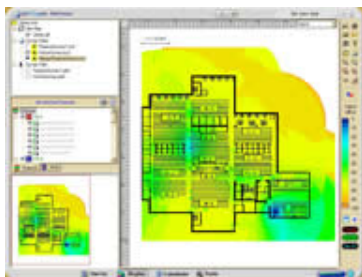


Security and Performance Analysis

[Laptop and Handheld](#) allow technicians and engineers to make sense of end-user complaints to quickly resolve performance problems, while automatically detecting hundreds of network vulnerabilities and security threats.

[VoFi](#) allows technicians and engineers to identify and resolve Voice over Wi-Fi problems and optimize performance.

[Enterprise](#) allows technicians and engineers to manage all locations of a wireless network with a “smart-edge” sensor hierarchical architecture.



Surveying and Planning

[Survey Planner](#) allows technicians and engineers to design a WLAN infrastructure from the ground up. Use it to determine the correct number, placement, and configuration of APs required to deliver full coverage for all end users.

[Survey Pro](#) allows technicians and engineers to capture live RF data during a site survey and simulate accurate “what-if” scenarios.

[Spectrum Analyzer](#) allows technicians and engineers to detect and identify interferers on wireless networks.